

IT & Computers at DTU

Contents

- Overview of the possibilities for IT at DTU
 - Internet/WiFi
 - Databars
 - ThinLinc
 - Programs
 - Print
 - LaTeX/ShareLaTeX
 - ...
 - Where can I get help?
-

Overview of the possibilities for IT at DTU

What do you get?

- Internet access at all major universities
 - Free black/white print
 - Access to a lot of programs
 - Mail account
 - +30 GB storage
 - High Performance Computing (raw computer power)
-

What you do NOT get

- A 100% alternative to your own computer
-

Internet

- eduroam ← Really nice
 - DTU Wireless ← Not quite as nice
-



- International collaboration → Internet here and at a lot of universities (and other places, like airports etc.)
 - Setup once and you are done
 - More secure (uses encryption etc.)
 - <http://gbar.dtu.dk/index.php/faq/4-eduroam>
 - (or find eduroam under the FAQ on the G-bar wiki)
-

DTU Wireless

- Only local → Internet here and nowhere else
 - Setup every time you connect
 - Not as secure as eduroam (no encryption etc.)
 - <http://wireless.dtu.dk>
-

IT at DTU

- IT is run by many different departments called “databars”
-

- Two large databars
 - Win-bar - <http://winbar.dtu.dk>
 - G-bar - <http://gbar.dtu.dk>
-

IT at DTU

- Several smaller databars
 - VR-bar
 - B-bar
 - E-bar
 - M-bar
- <http://databar.dtu.dk>

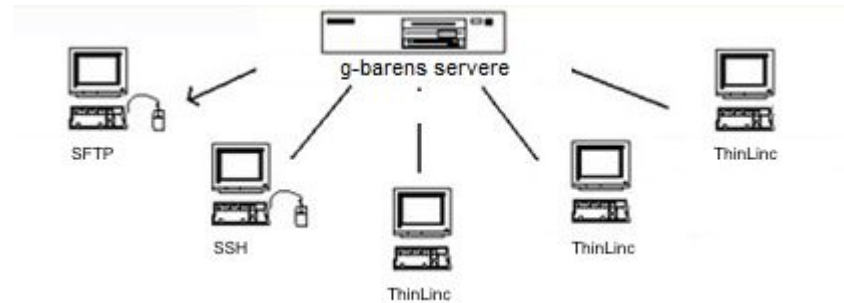
Win-bar

- Traditional “computer room”
 - Located many places on campus
 - Many different computers in one network
 - Uses “thick clients” aka normal computers
-

In the Win-bar you can...

- Use Windows and a lot of Windows programs
 - Print
 - Burn CD/DVD
 - Check your mail, browse the Internet etc.
 - Storage on home drive (H:)
 - Do reports in Maple...
-

- A centrally controlled Linux environment

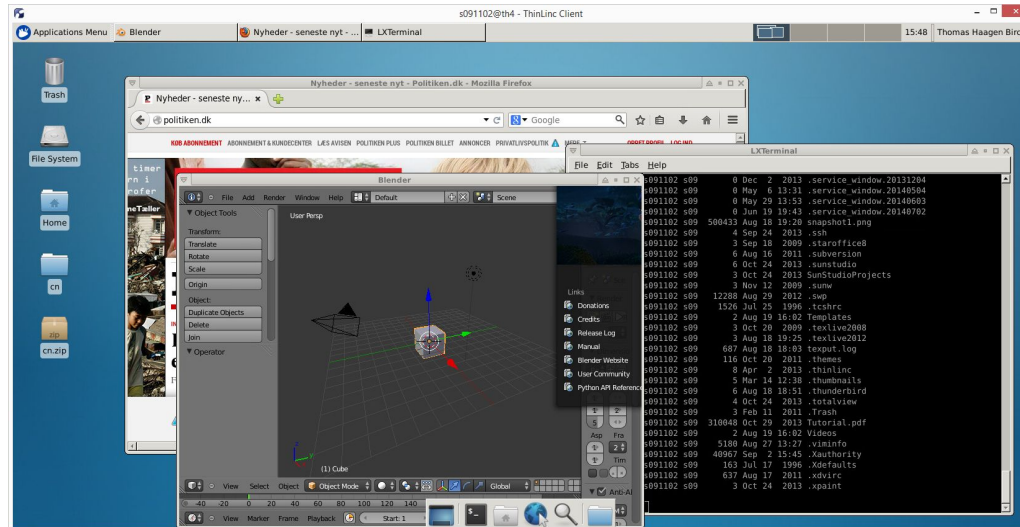


In the G-bar you can...

- Use Linux
 - Print
 - Check your mail, browse the Internet etc.
 - Do large simulations
 - Storage on home drive (I:)
 - Do reports in Maple
 - Only uses “thin clients” → no physical computers, only access via ThinLinc
-

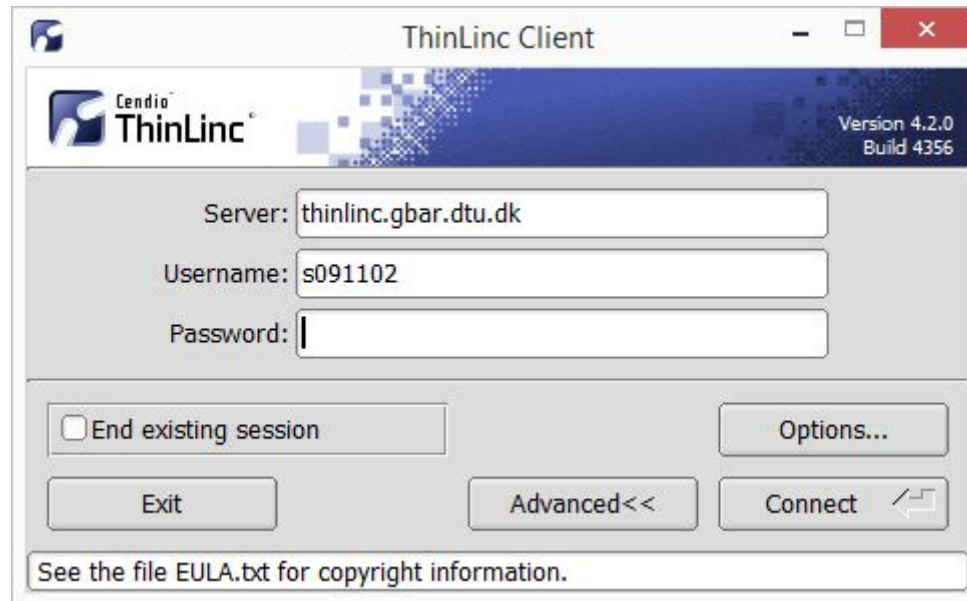
Note on Linux

- Operatingssystem like Windows and OS X
- Graphical interface and terminal



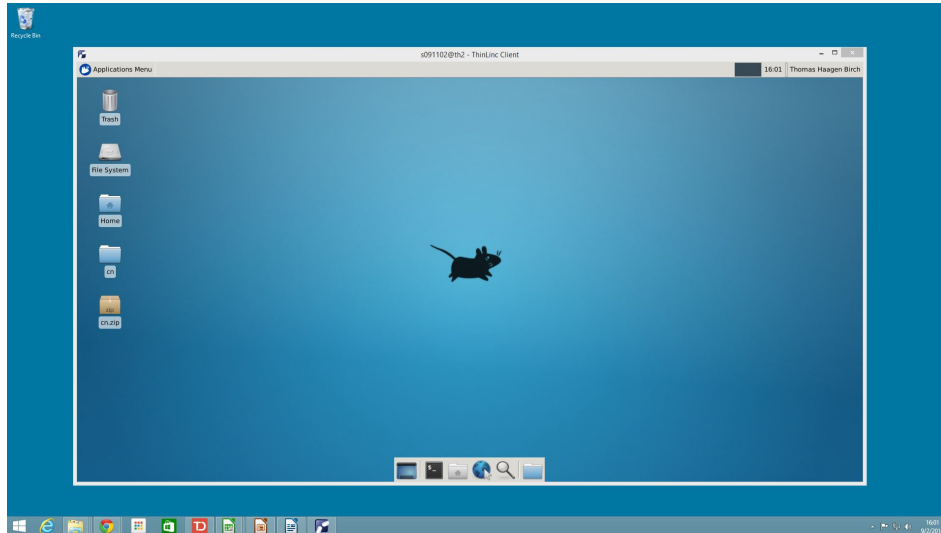
ThinLinc

- Program you download to your computer



ThinLinc

- You log in and get a Linux desktop presented



ThinLinc

- Works on all platforms (OS X, Windows, Linux)
 - Read more and get the client here
 - <http://gbar.dtu.dk/faq/43-thinlinc>
 - <https://www.cendio.com/>
-

What do you get access to?

- To many to mention
 - Highlights:
 - MatLab
 - Maple
 - Comsol
 - SolidWorks
-

Print

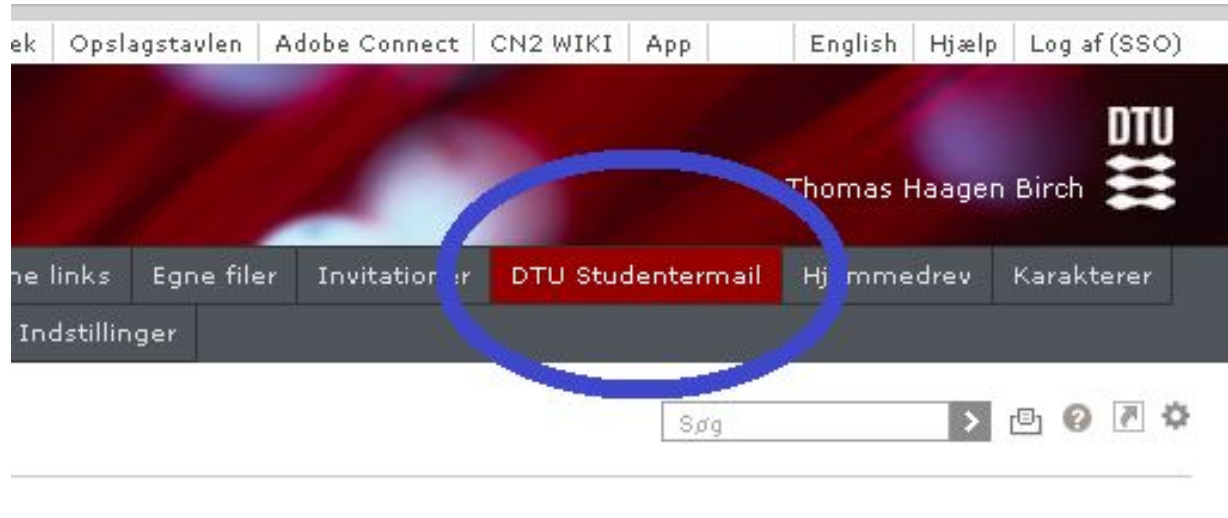
- Free if black/white
 - NOT free if colored → costs ~0.5DKK
 - Printers are in the databars and the library
 - Print from all thick/thin clients
 - Print from your own computer? → Sure!...
 - <http://www.gbar.dtu.dk/index.php/faq/46-print>
-

Mail

- Student mail: sxxxxxx@student.dtu.dk
 - It is important!
 - Course information
 - Identification
-

Mail

- Can be access in a couple of ways
- Web interface via CampusNet



Mail

- Can be access in a couple of ways
 - Via thin and thick clients using programs such as Thunderbird and Pine
 - Using your own favorite mail client on your own computer
 - Forward to existing mail
 - <http://gbar.dtu.dk/faq/54-mail>
-

Home drive

- Online storage for data/files
 - Use it to store
 - Written assignments
 - Projects
 - Lab results
 - Code
-

Home drive

- I: drive → Accessible from everywhere
 - Can be accessed using SFTP and CampusNet
 - <http://gbar.dtu.dk/faq/78-home-directory>
-

Home drive

- May NOT be used for illegal content!



LaTeX & ShareLaTeX

- LaTeX is a document preparation system
 - Works a lot like a programming language
 - Can be a little hard in the beginning, but definitely worth it
 - Do yourselves a favor → **Learn it early on!**
 - Intro course by DTU LaTeX support the 10th and 11th of October - <http://latex.dtu.dk/en/courses>
-

LaTeX & ShareLaTeX

- ShareLaTeX is a web service for LaTeX
 - Google docs for LaTeX → Can collaborate multiple people on the same documents
 - Find templates, help and more info at
 - <http://latex.dtu.dk>
 - <https://www.sharelatex.com>
 - Has their own support at DTU!
-

GitLab

- Place to share code
 - Nice platform for collaboration on programming projects
 - Working on projects using Dropbox can typically end in unintentional overwrites of files
 - <https://gitlab.cc.dtu.dk/>
-

HPC Cluster

- RAW POWER
 - HPC - “High Performance Computing”
 - Cluster of a lot of computers
 - Really large simulations/calculations
 - Probably not used until later in your studies
-

HPC Cluster

● HPC Cluster =



● Your own computer =



HPC Cluster

- Read more at <http://www.cc.dtu.dk>
-

Where can I get help?

G-bar wiki

- If you're in doubt on how to install and configure certain programs and tools
 - Check <http://gbar.dtu.dk/faq> or use the search bar on <http://gbar.dtu.dk>
-

Ask support via mail

- If you still have problems (or it's not on the wiki)
 - Write to itsupport@student.dtu.dk
 - Or check out <http://gbar.dtu.dk/contact> for the contact information
-

Come by our office!

- The G-bar has an office in building 308, room 125D → driven by student helpers
 - There is usually someone there who can help with a wide array of problems
 - Check our office hours at <http://gbar.dtu.dk/home> → can easily change from one week to another
-

Come by our office!

- Opening hours in this week (week 35)

g DATABAR OFFICE HOURS

	Monday	Tuesday	Wednesday	Thursday	Friday
8:00 - 9:00	Closed	Closed	Closed	Open	Open
9:00 - 10:00	Closed	Closed	Closed	Open	Open
10:00 - 11:00	Closed	Closed	Closed	Open	Open
11:00 - 12:00	Open	Closed	Closed	Open	Open
12:00 - 13:00	Open	Closed	Closed	Open	Open
13:00 - 14:00	Open	Closed	Closed	Open	Open
14:00 - 15:00	Open	Closed	Closed	Open	Open
15:00 - 16:00	Open	Closed	Closed	Open	Open
16:00 - 17:00	Open	Closed	Closed	Open	Open
17:00 - 18:00	Closed	Closed	Closed	Open	Open

Exercises

- Exercises that go step-by-step through various setups
 - Can be found at <http://gbar.dtu.dk/faq/93-exercises>
 - Really good introduction to IT at DTU
-

Exercises

- Two evening exercises with supporters
 - Tuesday the 6th of September at 17:00
 - Thursday the 8th of September at 17:00
 - Building 308, databar 101
 - You can just drop by, but please sign up if you already know you are coming
 - See <http://gbar.dtu.dk/faq/93-exercises> for more information (and sign up form)
-

Summary

- Lots of IT offers for you! You'll need it...
 - eduroam, mail, ThinLinc, programs, HPC etc.
 - You can always get help!
 - G-bar wiki <http://gbar.dtu.dk>
 - Support on mail itsupport@student.dtu.dk
 - Office <http://gbar.dtu.dk/home>
 - Exercises and evening exercises
 - Tuesday the 6th and Thursday the 8th of September
 - Building 308, databar 101
-

